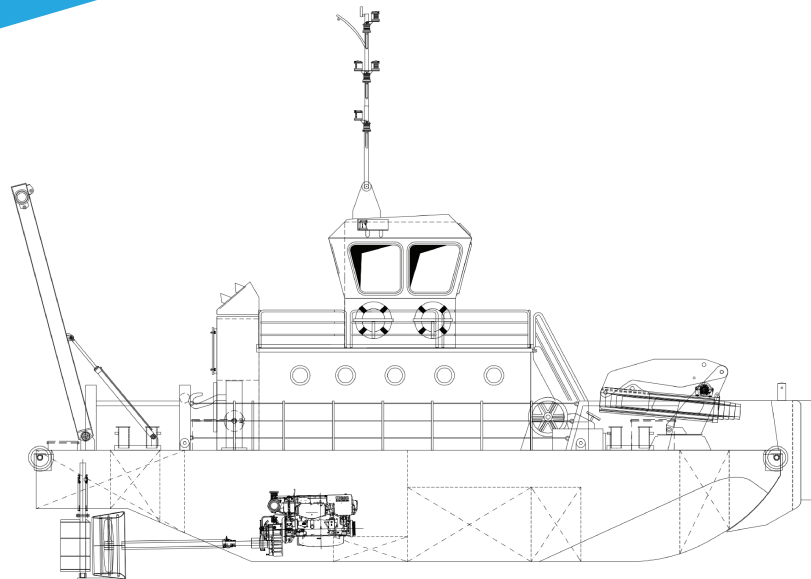
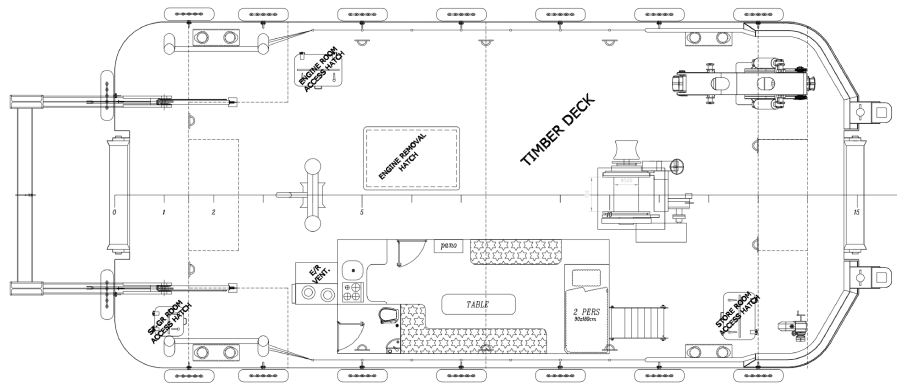


OCS “MISS BEE”

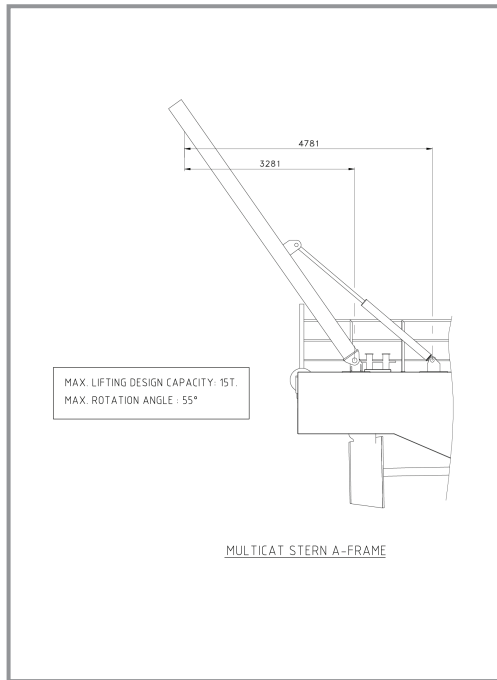
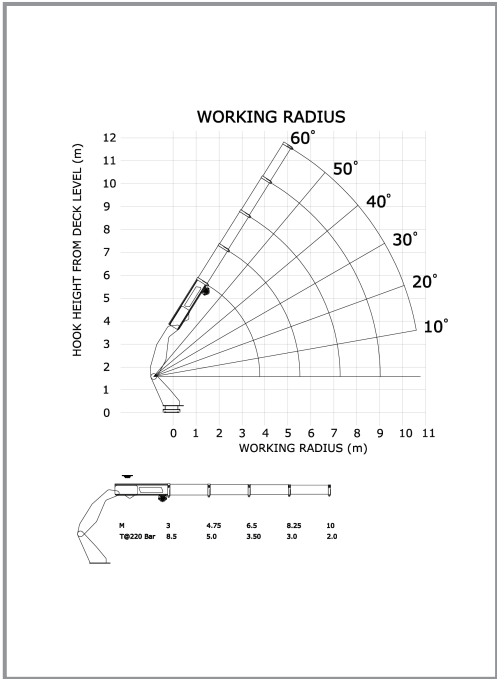
To support the Utility Barge, OCS has a Multicat shallow anchor handling tug. The Multicat is a twin engine (380 HP each) shallow work vessel with a minimum operating draft of 1.4m, capable of anchor handling off her bow and stern.



PROFILE



MAIN DECK



MULTICAT STERN A-FRAME

Offshore Construction Specialists

OCS Multicat

Registration

Owner	: PT. Obor Cemerlang Samudera
Operator	: Offshore Construction Specialists Pte Ltd
Official No. /Flag	: TBA / Indonesia
Fabricator	: LOYD Shipyard, Istanbul
Built Year	: 2017
Classification	: Bureau Veritas
Hull No	: LOYD230
Gross Tonnage	: 60.5 mT

Principal Particulars

Length Overall	: 15.85 m
Beam at Midship	: 7.0 m
Depth at Midship	: 2.0 m

Normal Operating Draft	: 1.5 m
Draft with Min Fuel & Water - Special Conditions	: 1.4 m

Lightship Weight	: 80 mT
LCG (From Frame No: 0)	: 8.04 m (Toward Bow)
TCG (From Centre Line)	: 0.01m (Towards Starboard)
VCG (From Keel)	: 1.52 m

Anchor Handling Winch

Winch Minimum Pulling Capacity	: 14 mT @ 200 bar
Wire Rope	: 28 mm diameter / 140m length
Inner Drum Diameter	: 500 mm
Drum Length	: 700 mm

Knuckle Boom Crane

Max. Moment Capacity	: 25 mT.m
Max. Horizontal Extension	: 10 m
Max. Vertical Extension	: 11 m
Max. Working Pressure	: 250 bar
Angle of Rotation	: 360°
Rotation System	: Rotary Table

A-Frame

Capacity	: 15 mT @4.7 m
----------	----------------

Communication & Navigation

Transducer	: Model SS60 / Frequency Range 50-200 KHZ
VHF Radios	: Model RS12
GPS	: Model ZG50
RADAR	: Model NAVICO BR 24 / 3G Broadband Radar
Magnetic Compass	: Model Plastimo

Facilities

Work Boat "OCS MISS BEE" is equipped with accommodation for 2 persons.

Main Engine & Generator

Main Engine	: 2x380 HP @ 2000RPM/ FPT (IVECO)
Propeller	: 2x4 bladed FPP @495RPM
Bollard Pull Capacity	: 8 mT
Max. Speed	: 9 knots
Deck Strength	: 4mT/m ²
Generator	: 17.5 kW, 3Phase

Windlass

Anchor Weight	: 120 kg. Ordinary Anchor
Anchor Chain	: 12.5 mm Diameter / Chain Length=126 m

Tanks

Fuel Tank Capacity	: 22.21 mT
Fresh Water Tank Capacity	: 2.74 mT
Ballast Tank Capacity	: 20.18 mT
Sewage Tank Capacity	: 0.88 mT

Fire-Fighting

Dry Powder Extinguisher	: 1x6 & 4x5kg. Dry Powder Extinguishers
CO2 Cylinder	: 1xCO2 Fire Fighting System Installed for Engine Room
Water-Spray	: Water-Spray System Driven by PTO for Deck Level