



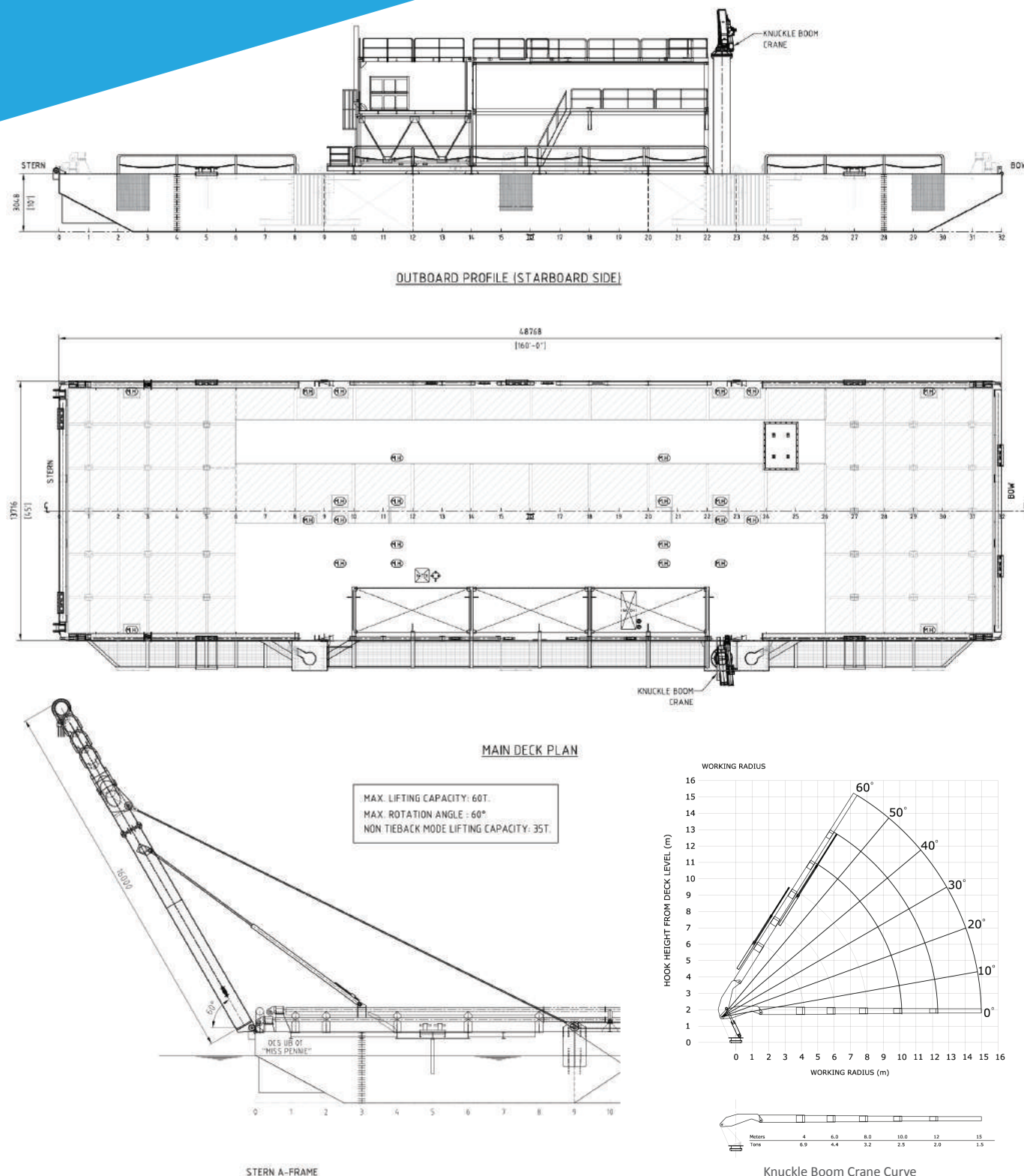
OFFSHORE CONSTRUCTION SPECIALISTS

UTILITY BARGE
OCS UB 01
"MISS PENNIE"
&
MULTICAT
OCS "MISS BEE"



OCS UB 01 “MISS PENNIE”

OCS has completed construction of a small utility barge of dimensions 160 ft x 45 ft x 10 ft in Batam, Indonesia designed to support shallow water projects. The vessel is attended by an in-house multicat AHT, Air Diving, Survey and Positioning equipment. OCS has purchased two long Cat 390 excavators and retains post trenching equipment inhouse.



Offshore Construction Specialists

OCS Utility Barge

Registration

Owner	: PT Obor Cemerlang Samudera
Operator	: Offshore Construction Specialists Pte Ltd
Official No./Flag	: GT.508 No.7093 / PPM / Indonesia
Built/Year	: Indonesia 2017
Classification	: RINA Services S.p.A.
Gross Tonnage	: 508 mT

Principal Particulars

Length Overall	: 48.768 m (160')
Beam at Midship	: 13.716 m (45')
Depth at Midship	: 3.048 m (10')
Designed Draft	: 2.048m
Min Operating Draft	: 1.40 m

Lightship Weight	: 491.38 mT
LCG (From Frame No: 0)	: 24.248 m (Toward Bow)
TCG (From Centre Line)	: 0.465 m (stbd of Centre)
VCG (From Keel)	: 3.048 m

Deck Area	: 675 m ²
Deck Loading	: 10 mT/m ²
Crane Track capacity	: 150 mT
Crane Capacity at Fixed - Positions	: 250 mT

Tow & Mooring

8 point Mooring System (Below Deck)	: 8 x 10 mT @ 6m/min
Anchor	: 8 x 1.5 mT, DELTA FLIPPER
Wire Rope	: 8 x 28 mm x 1000 m
Towing Gear	: Towing Bridle 2 x 2.16 in x 20 ft

Communication & Navigation

Satcom	: Fax / Phone / Email
Radios	: SSB, VHF
Gyro Compas	: 1 ea. "Sperry" FR2115

Facilities

Facilities	: Engineers Office, Client Office, Mess
------------	---

Electrical Power & Compressors

Generator	: 1 x 150 KVA (300KVA Optional)
Compressors	: 2 x 1070 (350 PSI)
Air Receiver Tanks	: 2 x 22 m ³ (350 PSI)

Safety Applications

Life Rafts	: 2 x 20 men
Life Jackets	: 50
Life Ring Buoys	: 5
Rescue Boat	: 1

Knuckle Boom

Max Moment	: 32 mT.m
Horizontal Extension	: 15.0m
Vertical Extension	: 15.0m
Max. Working Pressure	: 250 bar
Angle of Rotation	: 360° / Unlimited
Rotation System	: Rotary Table

Inhouse Support Equipment

Multicat AHT	: Twin 380 HP Engines, Bow / Stern Rollers, Stern A-Frame, Knuckle Boom Crane
Welding Machine	: 4 x 500 AMPS Miller Welding Machine (3 in 1, SMAW, TIG, MIG)
Survey	: DGPS Barge Management System
Excavators	: 2 Unit of Caterpillar 390 Excavators with Long Booms (18 Metre Down Reach) 2.0 m ³ Buckets
Jetting System	: Articulated Arm and Pipe Riding Jet Sleds and Full Suite of Pumps and Compressors
Air Diving	: Air Diving System with Chamber, LARS etc
Davits	: 4 x 25 mT

Crawler Crane

Capacity	: 150 mT
Boom length	: 70 ft

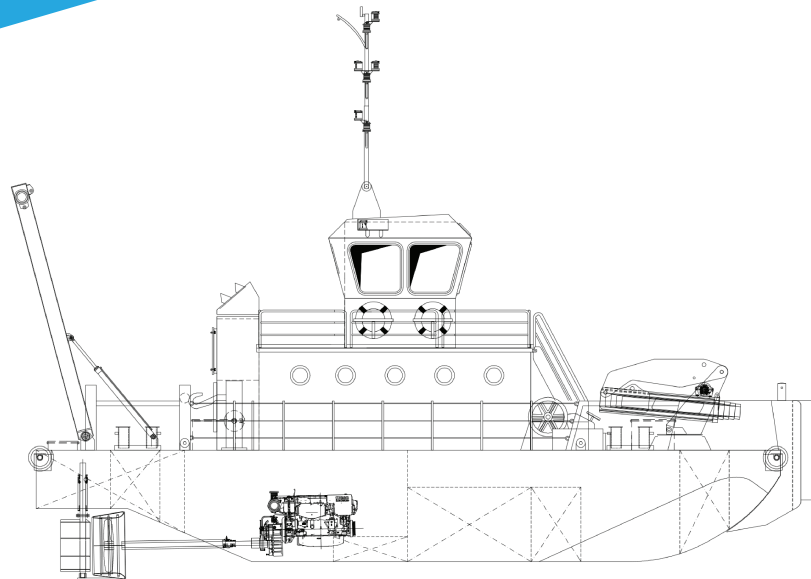
Tanks

Fuel	: 2 x 18 m ³
Fresh Water:	: 2 x 26.5 m ³
Ballast tanks	: 4 x 60 m ³

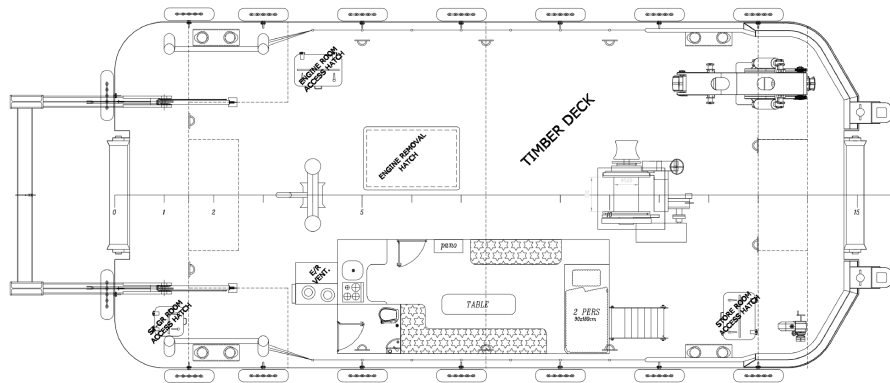


OCS “MISS BEE”

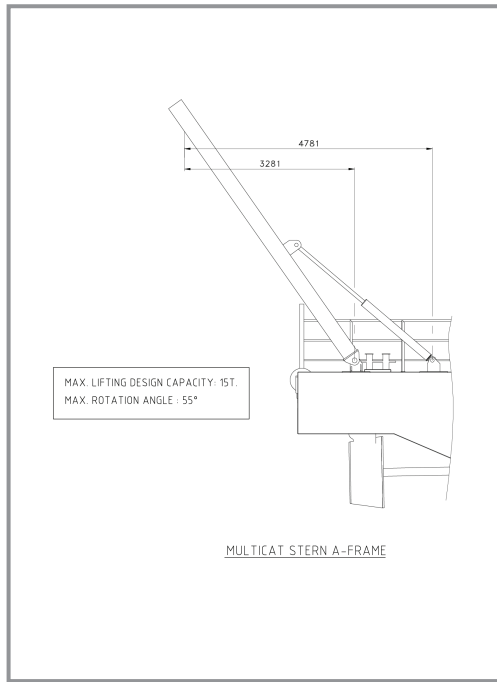
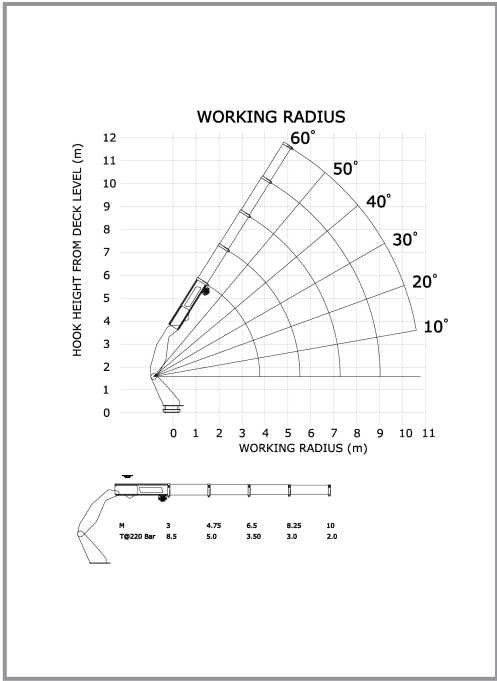
To support the Utility Barge, OCS has a Multicat shallow anchor handling tug. The Multicat is a twin engine (380 HP each) shallow work vessel with a minimum operating draft of 1.4m, capable of anchor handling off her bow and stern.



PROFILE



MAIN DECK



Offshore Construction Specialists

OCS Multicat

Registration

Owner	: PT. Obor Cemerlang Samudera
Operator	: Offshore Construction Specialists Pte Ltd
Official No. /Flag	: TBA / Indonesia
Fabricator	: LOYD Shipyard, Istanbul
Built Year	: 2017
Classification	: Bureau Veritas
Hull No	: LOYD230
Gross Tonnage	: 60.5 mT

Principal Particulars

Length Overall	: 15.85 m
Beam at Midship	: 7.0 m
Depth at Midship	: 2.0 m

Normal Operating Draft	: 1.5 m
Draft with Min Fuel & Water - Special Conditions	: 1.4 m

Lightship Weight	: 80 mT
LCG (From Frame No: 0)	: 8.04 m (Toward Bow)
TCG (From Centre Line)	: 0.01m (Towards Starboard)
VCG (From Keel)	: 1.52 m

Anchor Handling Winch

Winch Minimum Pulling Capacity	: 14 mT @ 200 bar
Wire Rope	: 28 mm diameter / 140m length
Inner Drum Diameter	: 500 mm
Drum Length	: 700 mm

Knuckle Boom Crane

Max. Moment Capacity	: 25 mT.m
Max. Horizontal Extension	: 10 m
Max. Vertical Extension	: 11 m
Max. Working Pressure	: 250 bar
Angle of Rotation	: 360°
Rotation System	: Rotary Table

A-Frame

Capacity	: 15 mT @4.7 m
----------	----------------

Communication & Navigation

Transducer	: Model SS60 / Frequency Range 50-200 KHZ
VHF Radios	: Model RS12
GPS	: Model ZG50
RADAR	: Model NAVICO BR 24 / 3G Broadband Radar
Magnetic Compass	: Model Plastimo

Facilities

Work Boat "OCS MISS BEE" is equipped with accommodation for 2 persons.

Main Engine & Generator

Main Engine	: 2x380 HP @ 2000RPM/ FPT (IVECO)
Propeller	: 2x4 bladed FPP @495RPM
Bollard Pull Capacity	: 8 mT
Max. Speed	: 9 knots
Deck Strength	: 4mT/m ²
Generator	: 17.5 kW, 3Phase

Windlass

Anchor Weight	: 120 kg. Ordinary Anchor
Anchor Chain	: 12.5 mm Diameter / Chain Length=126 m

Tanks

Fuel Tank Capacity	: 22.21 mT
Fresh Water Tank Capacity	: 2.74 mT
Ballast Tank Capacity	: 20.18 mT
Sewage Tank Capacity	: 0.88 mT

Fire-Fighting

Dry Powder Extinguisher	: 1x6 & 4x5kg. Dry Powder Extinguishers
CO2 Cylinder	: 1xCO2 Fire Fighting System Installed for Engine Room
Water-Spray	: Water-Spray System Driven by PTO for Deck Level



Experience at The Coalface of Marine Construction

OCS commenced operations in Singapore in 2007. The Company focus is the provision of construction management, engineering, strategic equipment and consulting services primarily to the offshore oil and gas sector.

Offshore Construction Specialists Pte Ltd

36 Kian Teck Road,
Singapore 628781

www.offshore-ocs.com

Tel: (65) 6898 0210

Fax: (65) 6898 0209

