

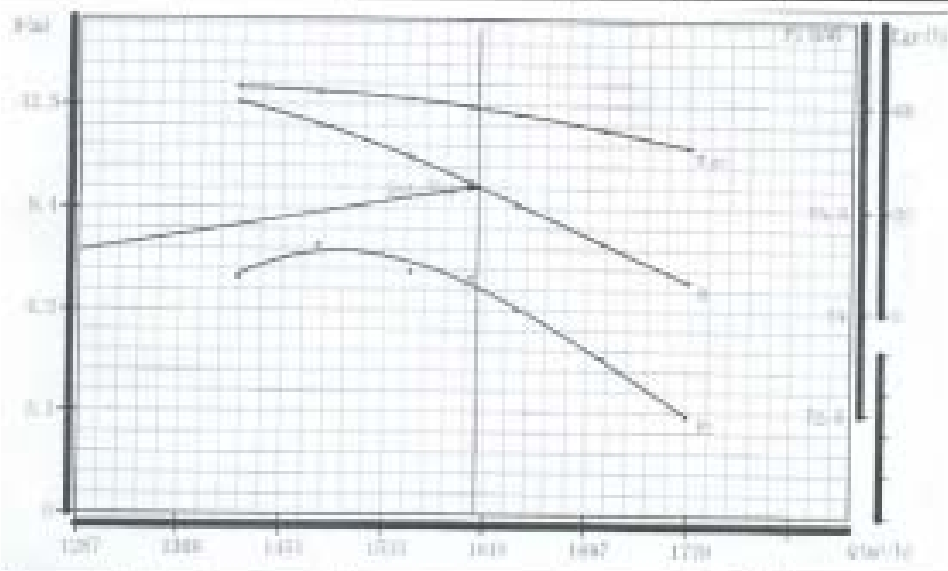


SUBMERSIBLE PUMP 400QWB1600

Fluid End	-	Tianjin Ganquan Group Corporation China
Flow Rating, m ³ /hr (USgpm)	-	1600 (7045), Head : 10m
Submerged Depth	-	≤ 20m
Suction Inlet	-	28"
Discharge	-	12", #150
Power,kW	-	75 (3-Phase, 50Hz, 380V)
Skid Framing, mm	-	2600 x 1340 x 960 x 2MT
No of Units	-	2

Submersible Pump Delivery Inspection

Tianjin Ganquan Group Corporation China			Test Date: 2013.03.20		
Pump No.: 170071			Pump No.: 170071		
Motor Rated Data			Submersible Pump Performance Test		
Voltage: 380	Head: 10m	Insulation Resistance:	Voltage(V)	Current(A)	Power (kW)
Rate: 50-Hz		500V/2500V, Qualified	No-load		
Phase: 3		Withstand Voltage Test	Locked-rotor		
Poles: 4	Discharge: 1600(m ³ /h)	1780V 1min			
Power: 75kW		Interface Impact	Resistance (Ω)	14.5°C	75°C
Rated Current: 155A	Test Medium: Clean Water	500V/0.2 μ s Qualified	U-U	0	0
Locked-rotor Current:			V-W	0	0
Insulation class: F	Water Temp: 14.5°C	Leakage Test	W-U	0	0



No.	Head(m)	Flow (m ³ /h)	Rotative Speed (r/min)	Current (A)	Input Power (kW)	Pump Set Efficiency	Measured Result
1	7.17	1728.4	1471.4	142.9	73.453	47.89	
2	8.32	1709.7	1470	144.64	73.288	52.87	Flow: Q=1607.83m ³ /h
3	9.49	1639.9	1470.2	146.56	74.022	57.33	Head: H=10.05m
4	10.18	1602.7	1470.1	146.59	74.481	59.63	
5	10.91	1523.8	1468.2	146.82	74.564	61.82	Input Power: P1=74.345kW
6	11.88	1479.3	1468.3	147.82	74.951	63.82	
7	12.98	1415.1	1468.6	147.49	74.48	65.14	Pump Set Efficiency: 39.19%
8							
9							
10							
11							
12							
13							

