

CAT 390DLME EXCAVATOR



OCS has the expertise, key personnel and equipment to provide single source, cost effective, trenching and burial for marine pipeline. OCS owns all the key elements of the pre and post trenching equipment spread. The equipment can be mobilized at a relatively short notice onto an OCS barge or a 3rd party barge provided by the customer

OCS owned CAT 390DLME Excavator is one of the OCS new assets added to the trenching equipment spread. OCS owned CAT390DLME Excavator is a heavy construction unit, which can be used for near shore trenching, material handling, driving piles and also demolition operations.

To add on, OCS owned CAT 390DLME Excavator comes with both heavy duty standard short reach and long reach (25m) stick configurations to suit to the worksite conditions.

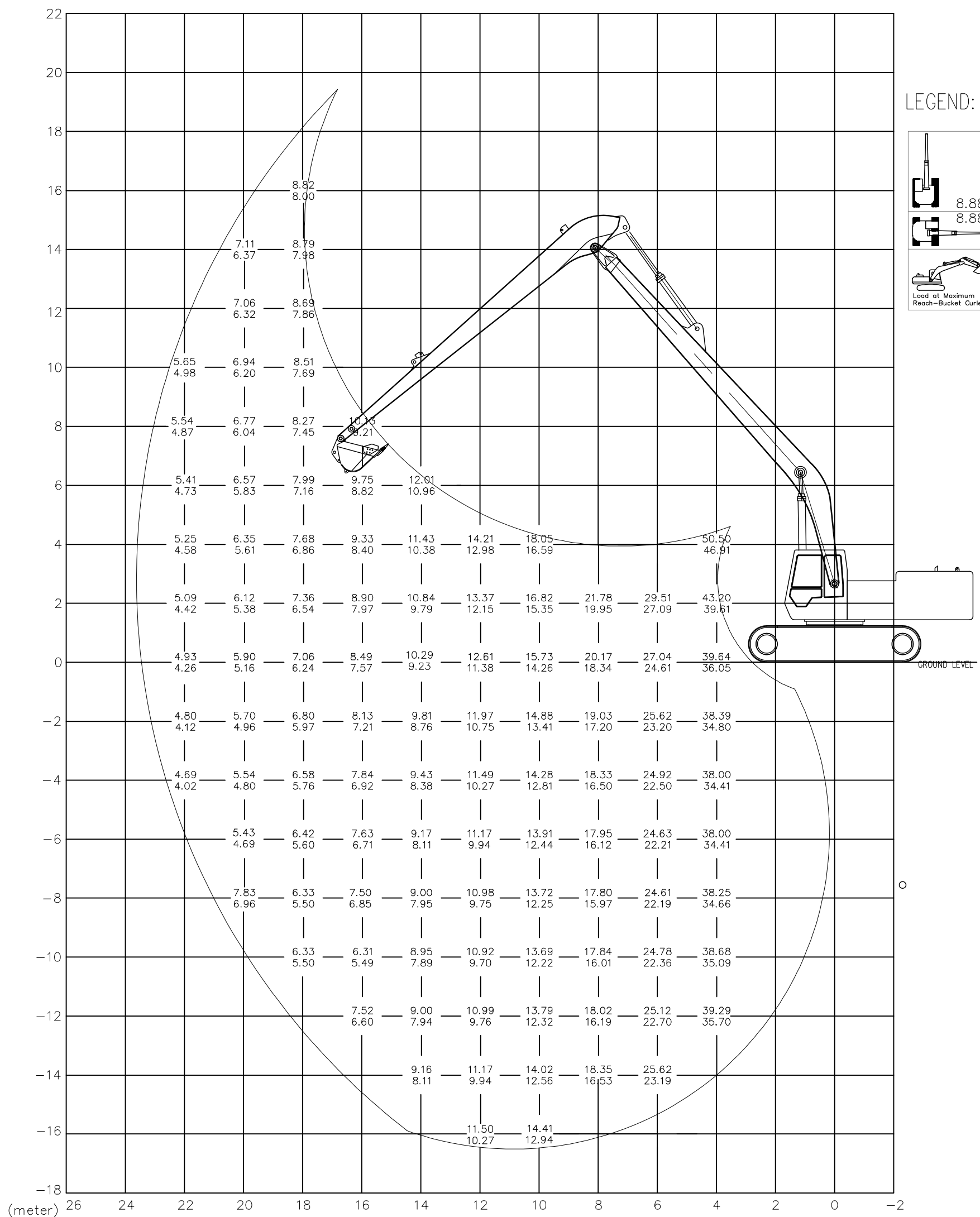
CAT 390DLME EXCAVATOR SPECIFICATIONS

CAT 390DLME Excavator	
ENGINE SPECIFICATION	
MACHINE MODEL	CAT 390 DLME
MACHINE SERIAL	WAP00294 & WAP00304
ENGINE MODEL	CAT C18ACERTTM (ATAAC)
NET POWER - ISO 9249	523 hp
ENGINE SERIAL	THX 01634 & THX 01651
Output Power	- 390 KW(523HP)
Bore	- 145mm , Stroke - 183mm
Maximum Rated Speed	- 2100 RPM
SWING MECHANISM	
SWING SPEED	6.2 RPM
SWING TORQUE	191766 ft.lbf
DRIVE	
MAXIMUM TRAVEL SPEED	2.8 mph
MAXIMUM DRAWBAR PULL	132637.25 lb
HYDRAULIC SYSTEM	
MAIN SYSTEM MAXIMUM FLOW	258.89 GAL/MIN
SWING SYSTEM MAX FLOW	121.52 GAL/MIN
MAXIMUM PRESSURE - EQUIPMENT	5076.3 PSI
MAXIMUM PRESSURE - SWING	3770.9 PSI
MAXIMUM PRESSURE - TRAVEL	5076.3 PSI
PILOT SYSTEM MAXIMUM FLOW	23.78 GAL/MIN
PILOT SYSTEM MAXIMUM PRESSURE	597.56 PSI
SERVICE REFILL CAPACITY	
FUEL TANK CPCTY	327.57 GAL
COOLING SYSTEM	26.68 GAL
ENGINE OIL	17.17 GAL
SWING DRIVE EACH	5.02 GAL
FINAL DRIVE EACH	5.55 GAL
HYDRAULIC SYSTEM INCLUDE TANK	262.85 GAL
No of Units	2

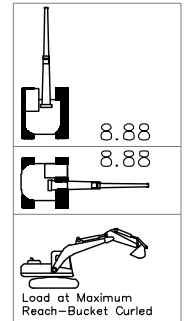
MAJOR COMPONENT WEIGHTS	Kg	lb
Base machine with counterweight and 750 mm (30in) shoes (without front linkage)	67950	149830
Two boom cylinders	1720	3793
Counterweight - GP		
Removal type	12410	27364
Non- removal type	12410	27364
Maximum Base machine without counterweight and with 750 mm (30in) shoes (without front linkage)	55540	122466
Boom (includes lines, pins, stick cylinder)		
Reach boom 10.0 m (32'10")	9750	21499
General Purpose Boom - 8.4 m (27' 7")	8310	18324
Mass Boom - 7.25 m (23' 9")	8480	18698
Stick (includes lines, pins, bucket cylinder and linkage)		
R5.5m (18' 1")	5430	11973
R4.4m (14' 5")	4930	10871
GP 3.4m (11'2")	5270	11620
GP 2.92m (9'7")	4910	10827
M 3.4m (11'2")	5420	11951
M 2.92m (9'7")	5170	11399
Approximate Weight	207700	457979

[illegible]

Elk 25m Long Reach Package



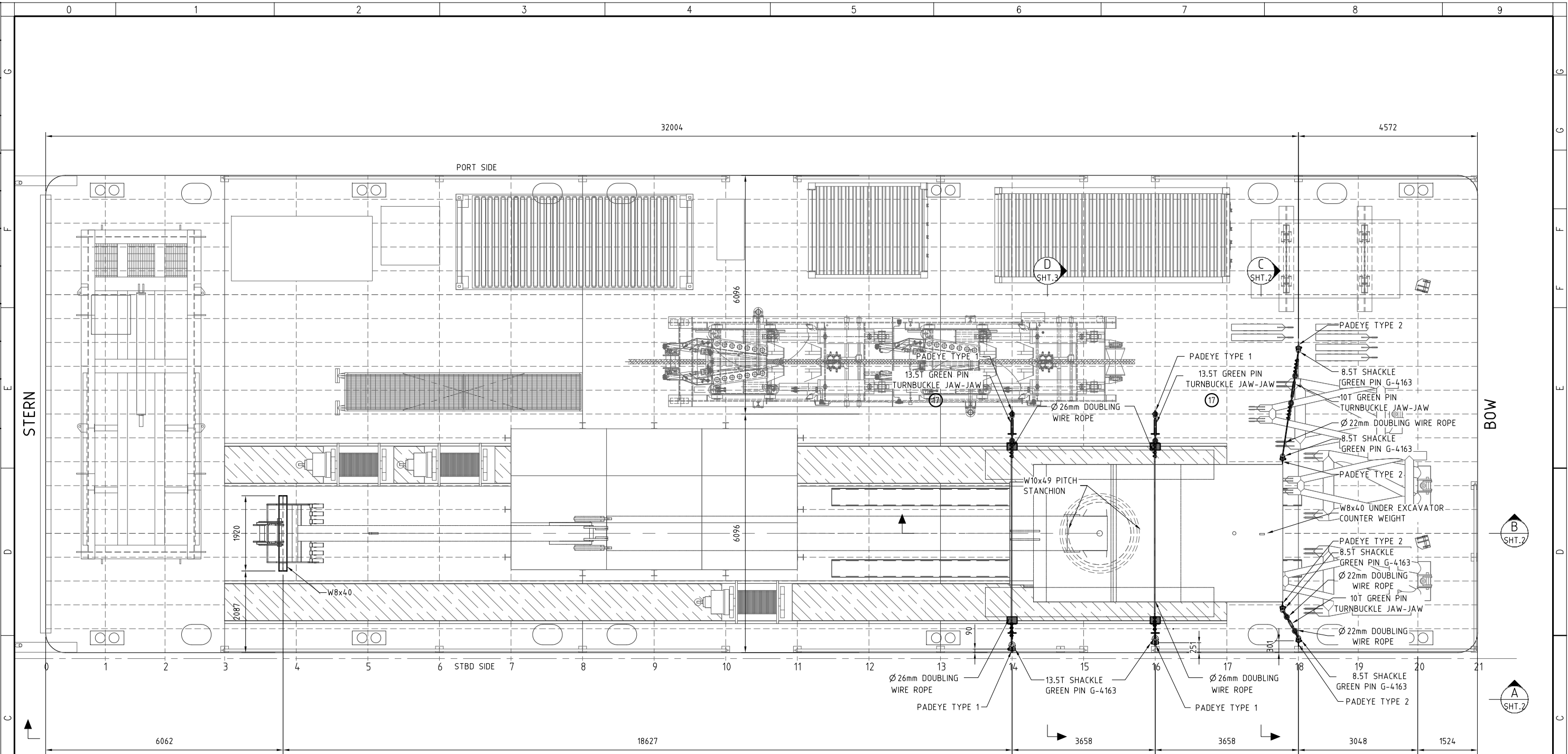
LEGEND:



NOTE:

- 1) The above loads do not exceed 75% of tipping capacity and not limited by hydraulic capacity.
- 2) The loads only valid when the machine is on the firm and flat ground.
- 3) The loads point is at the stick end is the net material weight it can lift. Bucket weight is 2150kg.
- 4) Excavator model is CAT 390D with 650mm track shoes and 3510mm track gauge.
- 5) Without Additional counterweight.

[illegible]

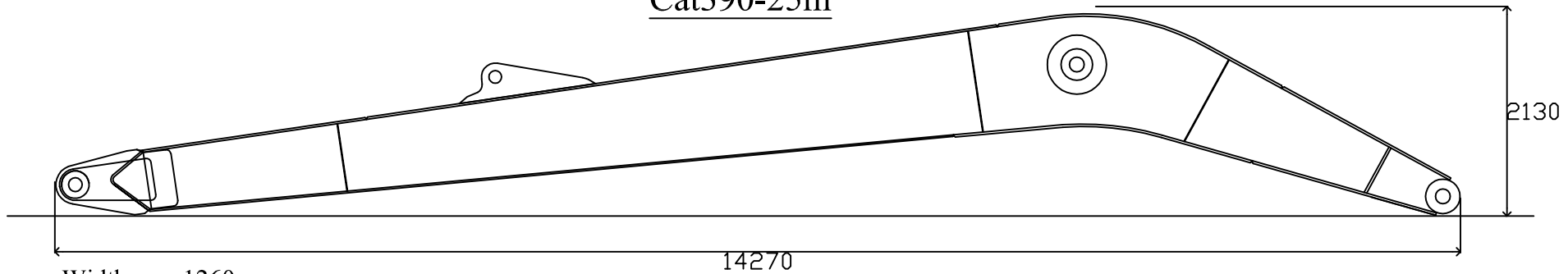
[illegible]

EXCAVATOR SEAFASTENING ON PULL BARGE
SCALE 1 : 100

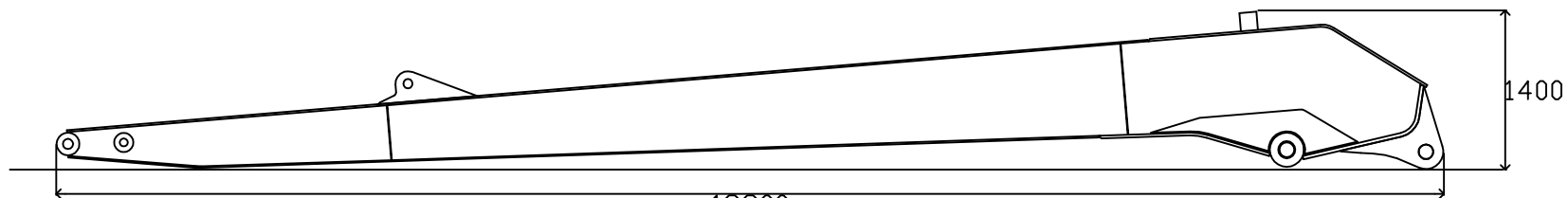
DRAFT ONLY

A	NOTES : 1. ALL DIMENSION ARE IN mm U.N.O. 2. ALL MATERIALS ARE OF 36 K.S.I. GRADE (UNO) 3. ALL FULL PENETRATION WELDS TO BE UT INSPECTED. 4. ALL FILLET WELDS TO BE 100% MPI. 5. ELECTRODE SMYS (MIN) – 70 KSI 6. ALL WELDING AS PER AWS D.1.1 & AS 1554.																<div>HCML Husky-CNOOC Madura Limited</div> <div><div><div><div>DPR INDONESIA</div><div>海油工程 COOEC</div></div><div><div>PT. TIMAS SUPLINDO EPCI COMPANY</div><div><div>OCS</div><div>OFFSHORE CONSTRUCTION SPECIALISTS</div></div></div></div></div>		CONTRACT No.: Scale AS SHOWN		Dwg. No.: J014-0CS-FAB-DWG-4001 SHT 1 OF 3	
	COMPANY APPROVAL:		A	23.05.16	ISSUED FOR REVIEW	CSN	ARYO	HRZ	AW		Project:MADURA BD FIELD DEVELOPMENT – EPCI Drawing Title 390D L EXCAVATOR SEAFASTENING ON RHB 1201 PULL BARGE		Rev. No. A									
Reference Dwg. No.	Title	Rev.No.	Date	Revision	By	Check	Review	SUBCTR App'd	HCML App'd													
0	1	2	3	4	5	6	7	8	9	A3												

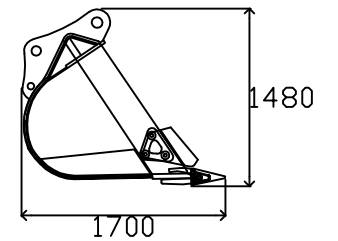
Cat390-25m



Width - 1260mm
Weight - 8750kgs

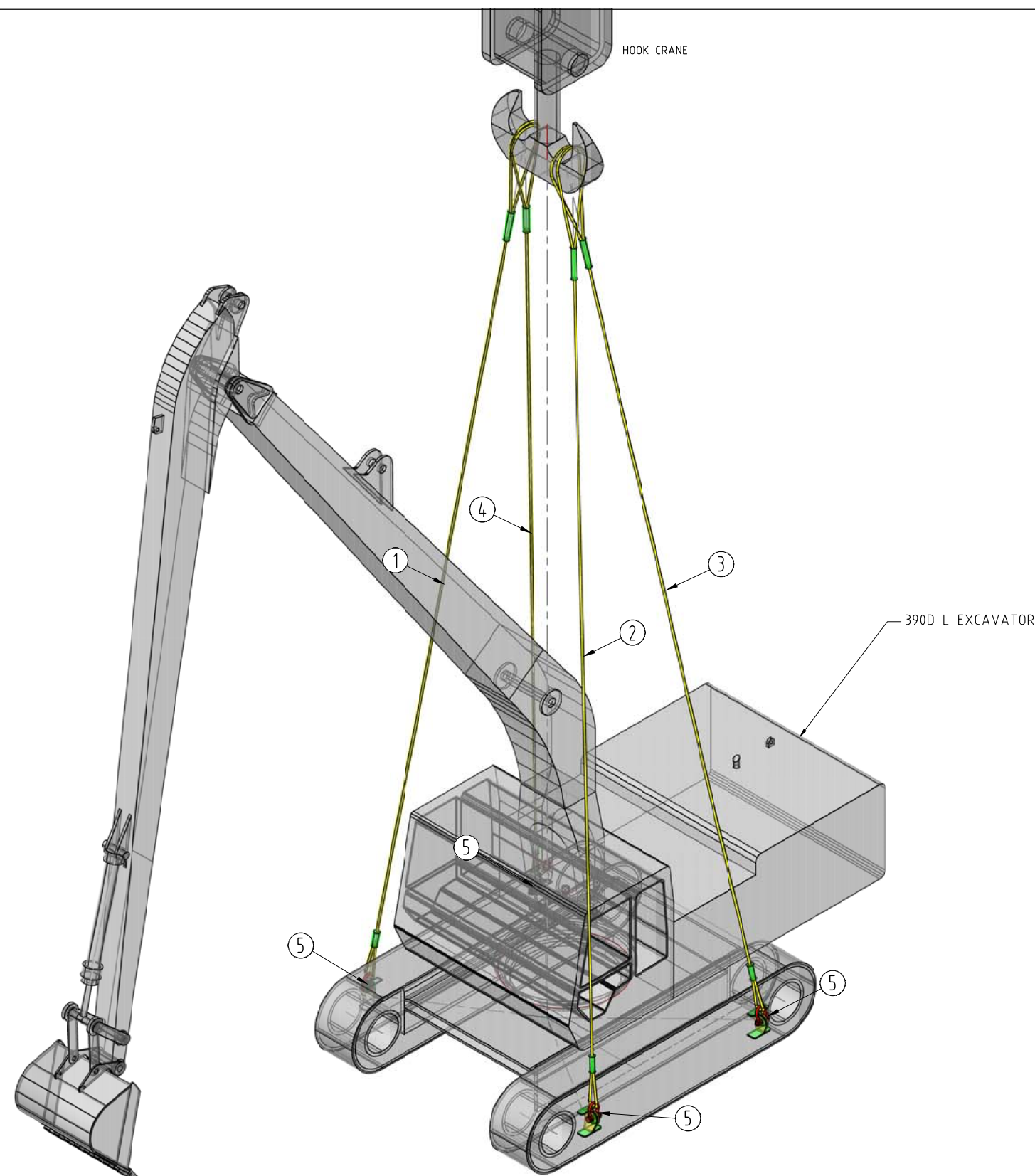


Width - 570mm
Weight - 4650kgs



Width - 1500mm
Weight - 1480kgs

390D L EXCAVATOR- LIFTING EQUIPMENT LIST		
ITEM	ID	DESCRIPTION
1	SL01	Ø 42mm SLING LENGTH = 15 METRES MBL = 132.5 MT STATIC SLING LOAD = 31.15 MT SLING ANGLE = 81.4 DEG.
2	SL02	Ø 42mm SLING LENGTH = 15 METRES MBL = 132.5 MT STATIC SLING LOAD = 31.15 MT SLING ANGLE = 81.4 DEG.
3	SL03	Ø 42mm SLING LENGTH = 15.083 METRES MBL = 132.5 MT STATIC SLING LOAD = 21.40 MT SLING ANGLE = 79.4 DEG.
4	SL04	Ø 42mm SLING LENGTH = 15.083 METRES MBL = 132.5 MT STATIC SLING LOAD = 21.40 MT SLING ANGLE = 79.4 DEG.
5	4	35 MT SHACKLE GREEN PIN G-4163



DRAFT ONLY

<div>NOTES :</div> <div>1. ALL DIMENSION ARE IN mm U.N.O.</div> <div>2. LENGTH OF SLING EYE AND HOOK DETAIL TO BE CONFIRMED BY OPERATIONAL.</div> <div>COMPANY APPROVAL:</div>										<div><div>HCMLHusky-CNOOCMadura Limited</div><div><div><div><div></div><div>PILINDONESIA</div></div><div><div>海油工程</div><div>COOEC</div></div><div><div></div><div></div></div></div></div><div><div><div><div></div><div>PT. TIMAS SUPLINDO</div><div>EPCI COMPANY</div></div><div><div><div><div></div><div>CSC</div></div><div>OFFSHORE CONSTRUCTION SPECIALISTS</div></div></div></div></div></div>	<div>CONTRACT No.:</div> <div>Scale</div> <div>AS SHOWN</div>	<div>Dwg. No.</div> <div>J014-OCS-FAB-DWG-5001</div> <div>SHT 1 OF 1</div>	<div>Rev. No.</div> <div>A</div>
											<div>Project:MADURA BD FIELD DEVELOPMENT – EPCI</div>		
											<div>Drawing Title</div> <div>390D L EXCAVATOR RIGGING ARRANGEMENT</div>		
	<div>Reference Dwg. No.</div>	<div>Title</div>	<div>Rev.No.</div>	<div>Date</div>	<div>Revision</div>	<div>By</div>	<div>Check</div>	<div>Review</div>	<div>SUBCTR App'd</div>	<div>HCML App'd</div>			
		A	24.05.16	ISSUED FOR REVIEW	KZA	ARYO	PRY	RR					

CONTRACT No.:		Dwg. No. J014-OCS-FAB-DWG-5001	Rev. No.
Scale			
AS SHOWN			
Project: MADURA BD FIELD DEVELOPMENT – EPCI			SHT 1 OF 1
Drawing Title 390D L EXCAVATOR RIGGING ARRANGEMENT			A