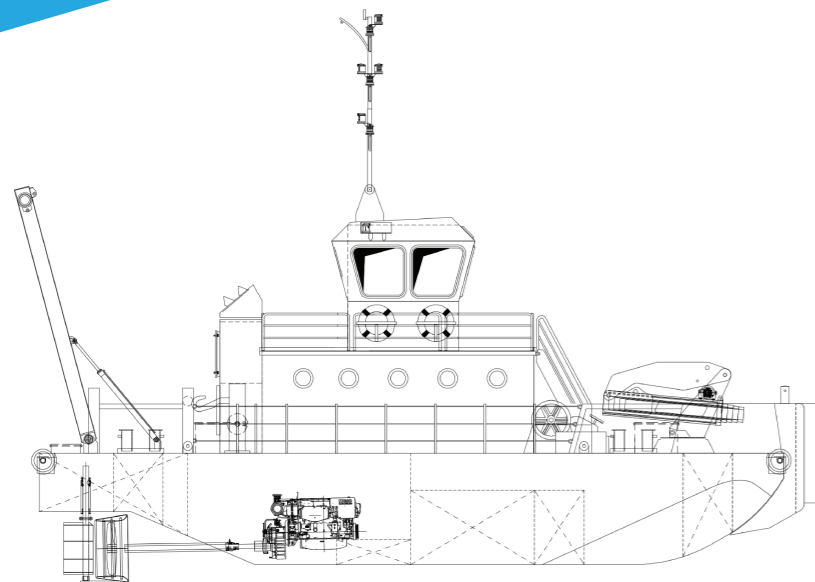
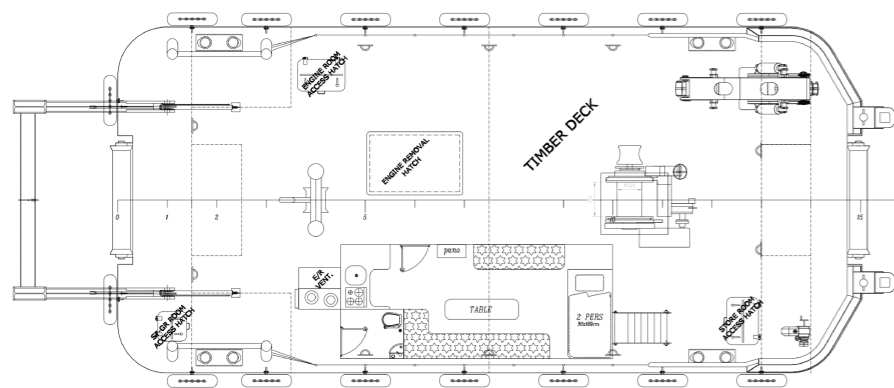


# OCS "MISS BEE"

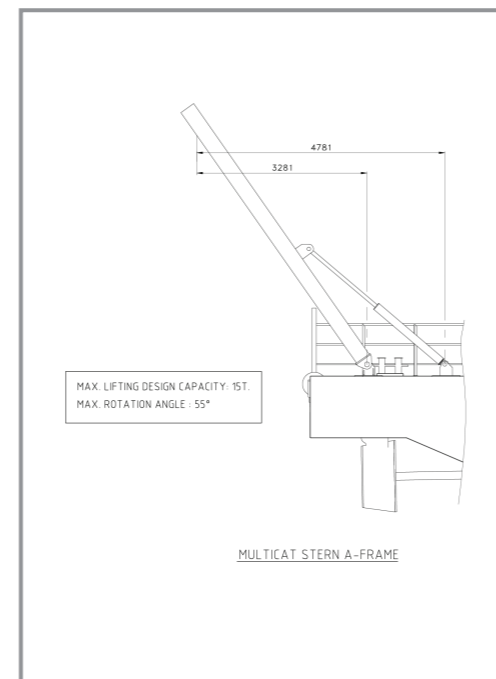
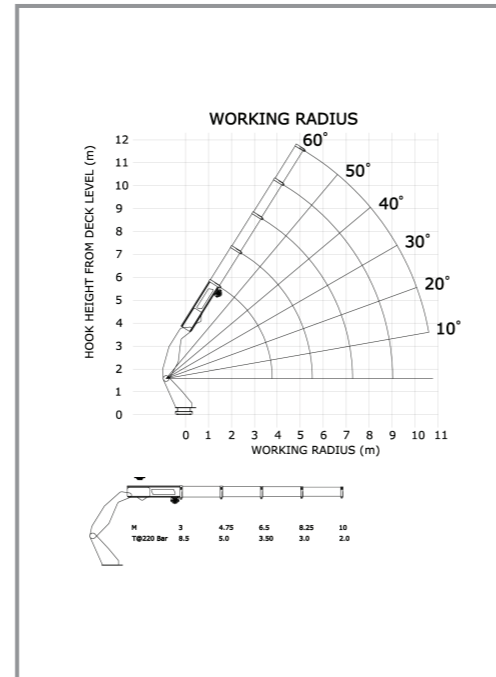
To support the Utility Barge, OCS has a Multicat shallow anchor handling tug. The Multicat is a twin engine (380 HP each) shallow work vessel with a minimum operating draft of 1.4m, capable of anchor handling off her bow and stern.



PROFILE



MAIN DECK



MULTICAT STERN A-FRAME

## Offshore Construction Specialists

### OCS Multicat

#### Registration

Owner : PT. Obor Cemerlang Samudera  
 Operator : Offshore Construction Specialists Pte Ltd  
 Official No. /Flag : TBA / Indonesia  
 Fabricator : LOYD Shipyard, Istanbul  
 Built Year : 2017  
 Classification : Bureau Veritas  
 Hull No : LOYD230  
 Gross Tonnage : 60.5 mT

#### Principal Particulars

Length Overall : 15.85 m  
 Beam at Midship : 7.0 m  
 Depth at Midship : 2.0 m

Normal Operating Draft : 1.5 m  
 Draft with Min Fuel & Water - Special Conditions : 1.4 m

Lightship Weight : 80 mT  
 LCG (From Frame No: 0) : 8.04 m (Toward Bow)  
 TCG (From Centre Line) : 0.01m (Towards Starboard)  
 VCG (From Keel) : 1.52 m

#### Anchor Handling Winch

Winch Minimum Pulling Capacity : 14 mT @ 200 bar  
 Wire Rope : 28 mm diameter / 140m length  
 Inner Drum Diameter : 500 mm  
 Drum Length : 700 mm

#### Knuckle Boom Crane

Max. Moment Capacity : 25 mT.m  
 Max. Horizontal Extension : 10 m  
 Max. Vertical Extension : 11 m  
 Max. Working Pressure : 250 bar  
 Angle of Rotation : 360°  
 Rotation System : Rotary Table

#### A-Frame

Capacity : 15 mT @4.7 m

#### Communication & Navigation

Transducer : Model SS60 / Frequency Range 50-200 KHZ  
 VHF Radios : Model RS12  
 GPS : Model ZG50  
 RADAR : Model NAVICO BR 24 / 3G Broadband Radar  
 Magnetic Compass : Model Plastimo

#### Facilities

Work Boat "OCS MISS BEE" is equipped with accommodation for 2 persons.

#### Main Engine & Generator

Main Engine : 2x380 HP @ 2000RPM/ FPT (IVECO)  
 Propeller : 2x4 bladed FPP @495RPM  
 Bollard Pull Capacity : 8 mT  
 Max. Speed : 9 knots  
 Deck Strength : 4mT/m<sup>2</sup>  
 Generator : 17.5 kW, 3Phase

#### Windlass

Anchor Weight : 120 kg. Ordinary Anchor  
 Anchor Chain : 12.5 mm Diameter / Chain Length=126 m

#### Tanks

Fuel Tank Capacity : 22.21 mT  
 Fresh Water Tank Capacity : 2.74 mT  
 Ballast Tank Capacity : 20.18 mT  
 Sewage Tank Capacity : 0.88 mT

#### Fire-Fighting

Dry Powder Extinguisher : 1x6 & 4x5kg. Dry Powder Extinguishers  
 CO2 Cylinder : 1xCO2 Fire Fighting System Installed for Engine Room  
 Water-Spray : Water-Spray System Driven by PTO for Deck Level

